

OFFICE OF THE RANCHI MUNICIPAL CORPORATION RANCHI



Bid Document For Twin Bin with Stand



HEALTH SECTION, R. M. C., RANCHI

Re e-tender for supply and installation of Pole Mounted Twin Bins of 150 ltr. Capacity each on MS Stand in the Ranchi Municipal area in Ranchi city – Req.

Sealed Re-tenders are invited from reputed manufacturers/authorized distributors/authorized suppliers for supplying and installation of Pole Mounted Twin Bins of 150 ltr. Capacity each on MS Stand at identified location in Ranchi Municipal Area, Ranchi.

2. Tenders in sealed cover superscribed “Tender for supply and installation of Pole Mounted Twin Bins of 150 ltr. Capacity each on MS Stand by the Ranchi Municipal Corporation” addressed to Municipal Commissioner, Ranchi should be put in the tender box placed at Executive Engineer, WSS, RMC office by 03:00 PM on 15/02/2016. Quotations received after the prescribed date and time will not be considered under any circumstances. The tender will be opened on 16/02/2016 at 04.00 PM in Hon’ble Mayor Chamber, Ranchi Municipal Corporation Office in the presence of the representative of the firms, not more than one personal.

3. Scope of Work:

Supplying and Installation of Pole Mounted Twin Bins of 150 ltr. Capacity each on MS Stand in the Ranchi Municipal Corporation as per the specification given below:

Sl. No.	Particulars	Quantity
1.	Pole Mounted Twin Bins of 150 ltr. Capacity each on MS Stand. Base to be fixed in PCC blocks. The Bin type and stand must conform the specification attached as annexure – I.	200 Nos.

4. Eligibility Criteria:

- i) The tenders should be submitted along with and EMD of Rs. 50,000/- (Rupees Fifty Thousand Only) drawn in favour of Municipal Commissioner, Ranchi Municipal Corporation, Ranchi. EMD should be in form of a Account Payee Demand Draft/Bankers Cheque, Fixed Deposit Receipt from a

commercial bank, Bank Guarantee from a Commercial bank. Any tender submitted without EMD or with an EMD in any other form would be summarily rejected.

- ii) The bidder should have financial turnover of not less than Rs. 50.00 Lacs in last two year.
- iii) Up-to-date Vat registration/sales tax clearance, PAN card.
- iv) Affidavit for non blacklisting in GOI/State Government/PSU.
- v) The firm/tenderer should provide details of TIN No. either in the name of the proprietor/owner/firm/company (copy of the TIN No. should be enclosed as proof).
- vi) Authorization letter from manufacturer as supplier or distributor.

5. Terms and Conditions:

- a) Tenderer is required to quote the rates for supply the Pole Mounted Twin Bins of 150 ltr. Capacity each on MS Stand including installation charges and taxes, if any.
- b) The successful tenderer is required to supply Pole Mounted Twin Bins of 150 ltr. Capacity each on MS Stand in the RMC within 45 days after receipt of supply order by this RMC as per the specifications.
- c) Tenderer is required to give one year warranty on the Pole Mounted Twin Bins of 150 ltr. Capacity each on MS Stand.
- d) The successful tenderer will have to deposit performance security valid for one year and two months in the form of Fixed Deposit Receipt from a Commercial Bank, Bank Guarantee from a Commercial Bank amounting to 5% of total contract value which will be return by the RMC on completion of one year and two months.
- e) The Ministry reserves the right to accept or reject any quotation in part or whole without assigning any reason thereof.

- f) Above terms and conditions are not exhaustive but general in nature and will also include such conditions intimated while awarding the contract.
- g) The decision of the RMC shall be final and binding on the agency.
- h) In case of any dispute the jurisdiction of law will be Hon'ble High court Ranchi.

Sd/-
Municipal Commissioner
Ranchi Municipal Corporation, Ranchi.

Pole Mounted Twin Bins of 150 ltr. Capacity each with M. S. Stand

General Technical requirement For TE :

General Technical Requirements:

1. The Garbage Bin body shall be designed in such a way to give strength in each side and bottom of the container . The design of the Garbage Bin should be such that it should stand erect and stable on ground-without stand. The Garbage Bin body shall be vertically symmetrical (10 % inward tapering) from top end to bottom end.
2. Collar of Garbage Bin should be designed in U shape having curve radius 12.5 mm and at least 25 mm height as per drawing.
3. Garbage Bin lid should have opening in front side for putting the garbage. The lid shall have a semi circle opening for rectangular Garbage Bin with height of 200 mm and also have at least 25 mm rib around the opening of lid to prevent the garbage spill over .
4. Lid and container of Garbage Bin should be fixed with heavy duty hinge made of steel(strip 40 mm wide and minimum 2mm thick sheet) with suitable riveting and screw arrangements as shown in the drawing. The lid should have 40 mm height border around three sides & the forth side (back side) to be fixed with hinges.
5. The LLDPE Garbage Bin should be mounted on a steel cage fitted into two steel standposts with bushes to enable rotational motion of Garbage Bin as per detailed drawing shown for removal of garbage and cleaning and also for easy handling.
6. Length of standpost for bin above the ground shall be 900 mm for 100 litres, 1000 mm for 150 litres and 1100 mm for 200 litres except top round cap and 500 mm below the ground for erection in the concrete properly with marking on the standposts to indicate the ground level.
7. Standpost should be made from heavy duty black pipe conforming to IS 1161/1998 of 50 mm NB for 100 litres bin, 65 mm NB for 150 litres bin and 80 mm NB for 200 litres bin with suitable anchoring made of MS plate of size 300 X50X5 mm at the bottom of the standpost for grouting.
8. The steel cage should have locking system with the standpost ;
9. Between the standposts , a cross plate of size 50x5 mm duly welded for support and each to be stably fixed at 100 mm above from the ground. The length of support plate should be equal to distance between standposts as per drawing.
10. The minimum thickness of LLDPE Garbage Bin container and lid shall be 4mm for 100 litres, 5mm for 150 litres and 6 mm for 200 litres .
11. The minimum weight of each LLDPE Garbage Bin container and lid for different capacity are as under:

Capacity(Litres)	Container(Kg)	Lid (Kg)
100	5.0	2.8
150	7.6	4.1
200	11.1	5.4

Capacity (Litres)	Top Side (mm)	Bottom Side (mm)	Height (mm)
100 (Rectanqular)	475 (Square)	400 (Square)	620

12. The each LLDPE Garbage Bin container and lid should have at least 0.25 % UV additive and pass the UV Resistance Test [Requirement and method of UV test as per Sl No (ix) of table 1 and as per Annex C of IS 14887/2014]. Lab should also confirm in the report itself that there is no change in colour after 192 hours exposure of sample. One sample from the each offered lot of size 500 Nos of containers shall be sent to CIPET, IIP or any Central Govt. Laboratory by inspection agency during each inspection for UV Resistance Test. If lot size is more than 500 Nos., in such cases each lot will be divided in 500 Nos & tested as per the above procedure.
13. The steel cage (as per drawing) shall be manufactured from flat strip of minimum size 15x3 mm. The top and bottom ring of steel cage shall have strip of minimum size 25x3 mm and also provided with two handles at top and bottom ring at the centre on backside having the strip of 15X3 mm with length of 125 mm & height of 50 mm.
14. The LLDPE Garbage Bin container should be properly riveted with the steel cage with 8 Nos rivets on the ring top ie two nos at each side for double bins and similarly 4 nos for single bin.
15. The steel cage shall be made as per drawing and properly riveted .
16. All the steel components i.e. standposts , cage and other fixtures shall be powder coated with green/blue colour as per the requirement of the indenter with minimum thickness of coating of 100 micron at any place .
17. The height of the Garbage Bin on structure should be such that the user can push in the garbage at a maximum height of 4 feet.
18. The Dimensions of the container of Garbage Bin of different capacities are as under:

150 (Rectangular)	520 (Square)	430 (Square)	700
200 (Rectangular)	560 (Square)	460 (Square)	820

19. The variation in Length, Width and Depth of container of Garbage Bin shall be +- 3 % under the condition that its capacity should not be less than the required limit and function properly.

20. A Swachh Bharat Mission logo provided by MoUD shall be embossed on the LLDPE container of Garbage Bin with the exact size along with name of manufacturer, month and year of manufacturing. The logo of user shall also be printed on the display plate which is 1 mm thick MS plate of minimum size 350x250 mm fixed on steel cage properly riveted as per design. (Logo of MoUD is attached in this specification)

21. LLDPE Garbage Bin container and lid shall be made from only virgin material and no recycled contents shall be used for manufacturing of the LLDPE Garbage Bin container and lid.

22. Ash content of the LLDPE shall not be more than 1% when tested as per method as described in Annex D of IS 14887/2014..

23. The colour of the LLDPE Garbage Bin container & lid shall be green and/ or blue for biodegradable and non-biodegradable as per requirement of the indenter.

24. The tensile strength of LLDPE material shall be 15 MPa (1.5Kg/Sq.mm) Minimum.

25. The LLDPE Garbage Bin container shall pass drop test as specified below:

The LLDPE Garbage Bin container with lid shall be filled with sand of weight of 60% of its water capacity weight (i.e. 100 litres Garbage Bin container shall be filled with 60 kg sand) and when drop flat on the cemented floor from a height of 1.2 metres there should not be developed any crack on the Garbage Bin container. The same Garbage Bin container shall be filled with sand of weight of 30 % of its water capacity weight (i.e. 100 litres Garbage Bin container shall be filled with 30 kg sand) and drop on cemented floor on edge from a height of 1.2 metres, the Garbage Bin container should not develop any crack. Height shall be measured from bottom of the Garbage Bin container to the floor when drop flat and from edge of the Garbage Bin container to the floor when drop on edge.

26. Each consignment shall accompany with the documents/invoices and manufacturer's test certificates from O.E.M's for the raw material (such as polymers, steel pipe, steel flats, rivets etc) used in the LLDPE Garbage Bin container at the time of inspection for the offered lots.

27. The acceptance tests shall be carried out at the firms premises during inspection as per Inspection Report Performa DQA/GE/287 and as per drawings DQA/GE/RC/287/SB-100/01 to 07, DQA/GE/RC/287/SB-150/01 to 07, DQA/GE/RC/287/SB-200/01 to 07, DQA/GE/RC/287/DB-100/01 to 07, DQA/GE/RC/287/DB-150/01 to 07, DQA/GE/RC/287/DB-200/01 to 07 enclosed.

28. The samples for tests shall be drawn as per clause 8 of IS 12701/1996 (reaffirmed 2006). All tests shall be as per clause 7 of IS 12701/1996 (reaffirmed 2006) except clause 7.6 shall be tested during inspection.

29. All welding shall be done by MIG process and it shall be free from all defects like pin holes, burs, slag etc.

30. Colour of Garbage Bin, lid and standpost shall be approved by the indenter before bulk production and supply.

31. Indenter have the choice to buy the Garbage Bin with stand or without stand. The Garbage Bin without stand means only LLDPE Garbage Bin container with lid.

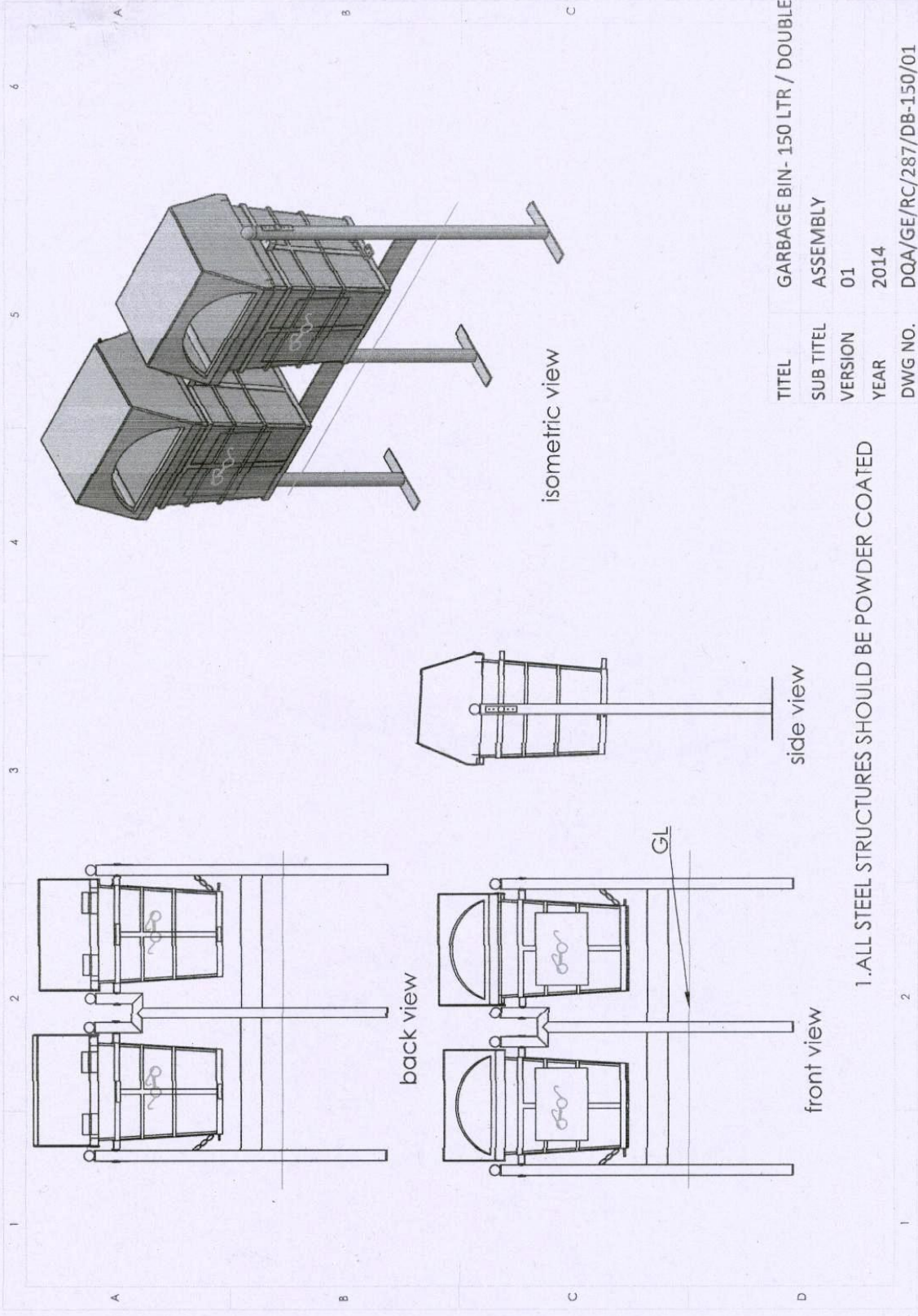
32. Density and MFI of LLDPE will also be tested from finished product i.e Lid and container.

33. Scope of Work:- Items on R/C would be a supply contract only. Installation/ Commission of the Garbage Bin including civil work would be done by the ULBs/ consignees themselves.

Eligibility Criteria Ref.No.DQA/GE/RC/287

Date 22-12-2014

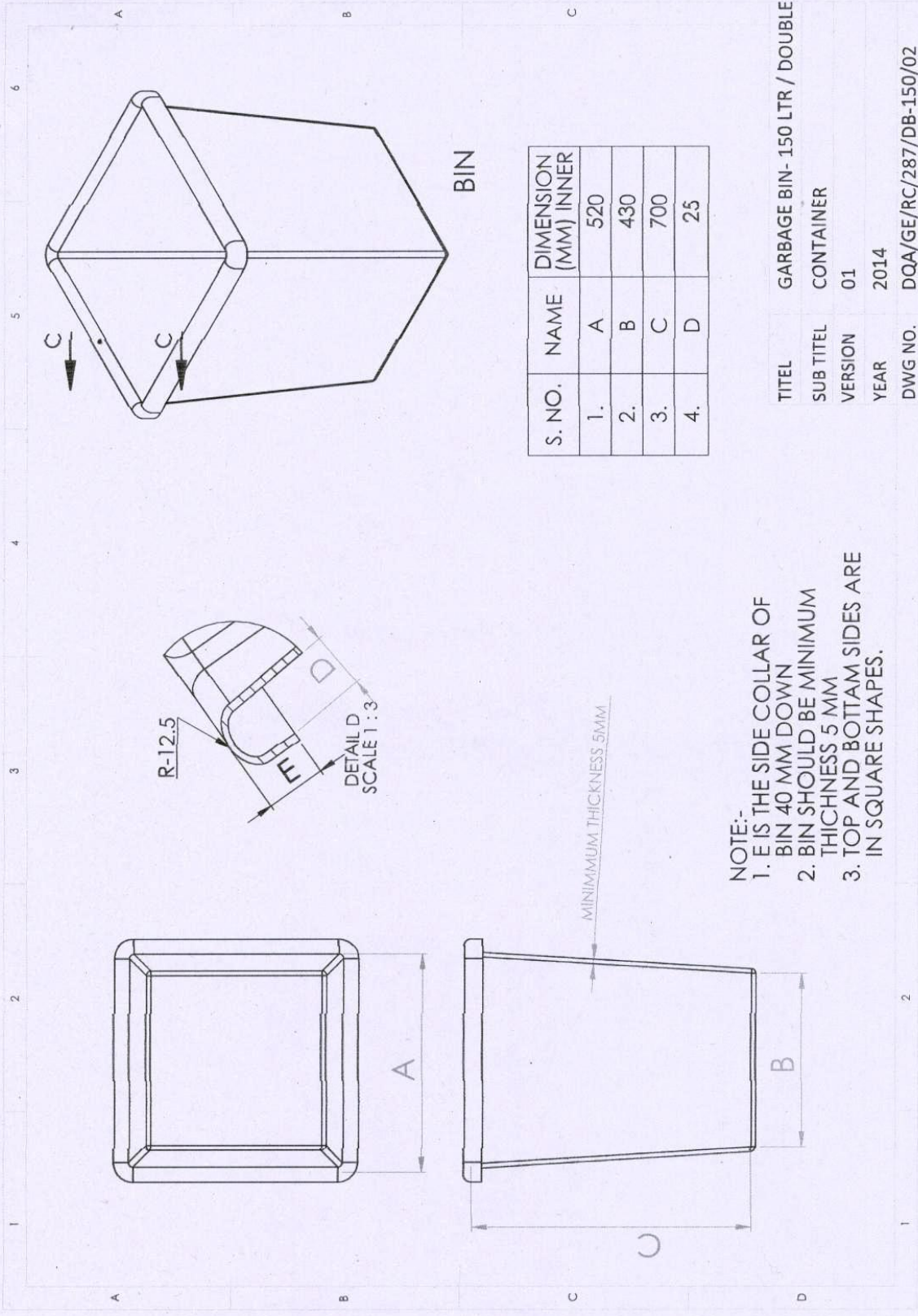
Eligibility Requirement for the tenderer in respect to Mini Plant & Machinery, testing facility etc. :



TITEL	GARBAGE BIN- 150 LTR / DOUBLE
SUB TITEL	ASSEMBLY
VERSION	01
YEAR	2014
DWG NO.	DQA/GE/RC/287/DB-150/01

1. ALL STEEL STRUCTURES SHOULD BE POWDER COATED

2

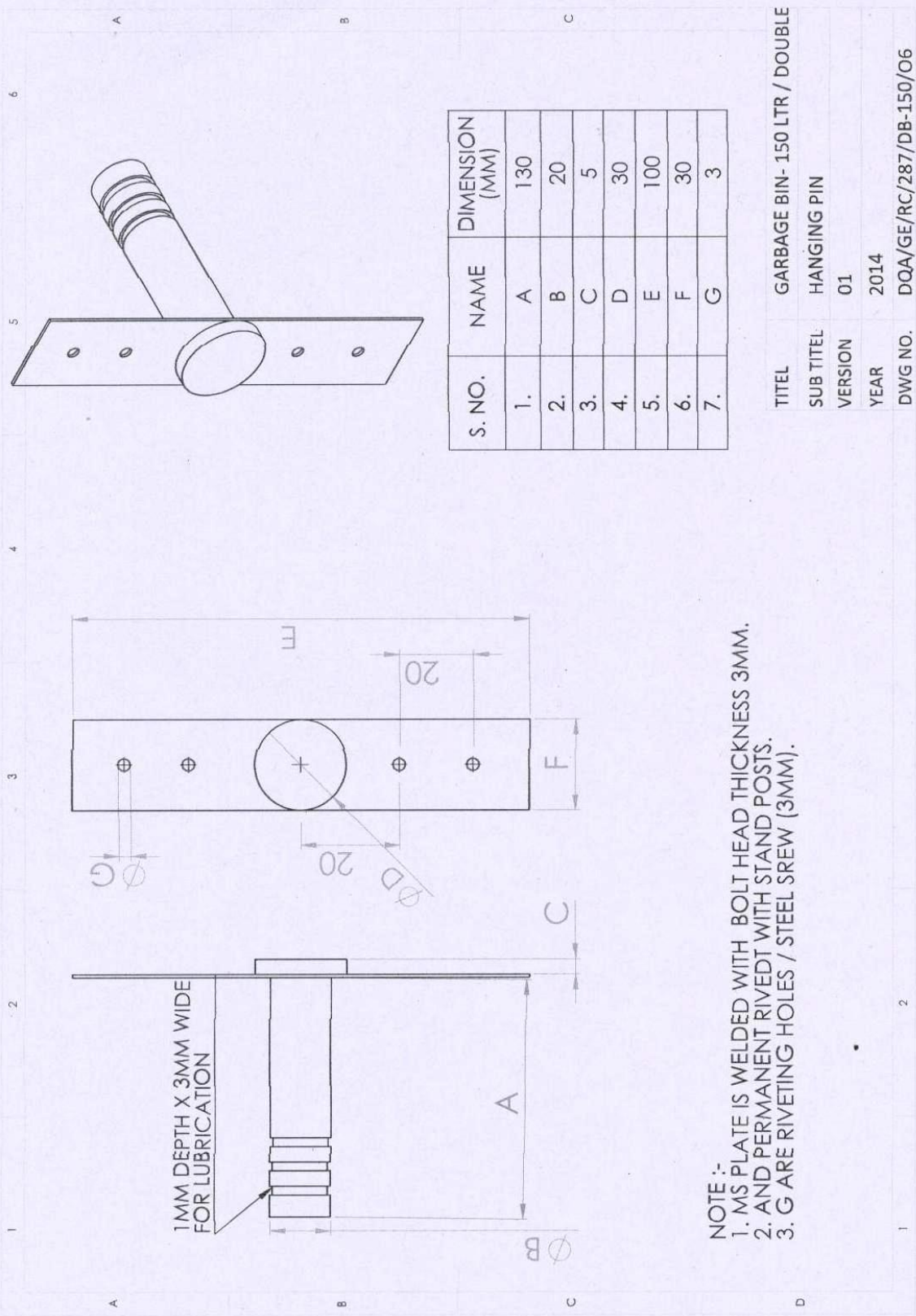


BIN

S. NO.	NAME	DIMENSION (MM) INNER
1.	A	520
2.	B	430
3.	C	700
4.	D	25

- NOTE:-**
1. E IS THE SIDE COLLAR OF BIN 40 MM DOWN
 2. BIN SHOULD BE MINIMUM THICKNESS 5 MM
 3. TOP AND BOTTOM SIDES ARE IN SQUARE SHAPES.

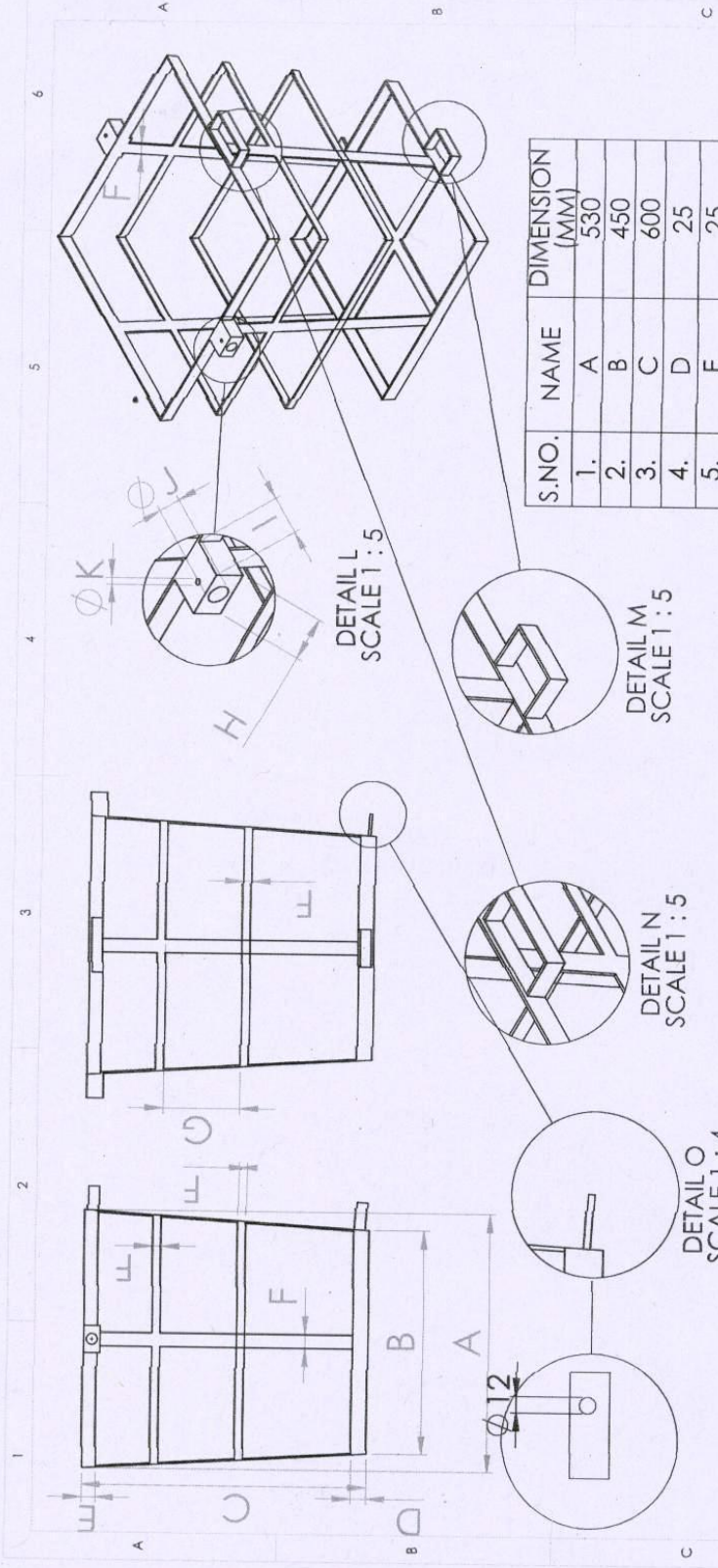
TITEL	GARBAGE BIN- 150 LTR / DOUBLE
SUB TITEL	CONTAINER
VERSION	01
YEAR	2014
DWG NO.	DQA/GE/RC/287/DB-150/02



S. NO.	NAME	DIMENSION (MM)
1.	A	130
2.	B	20
3.	C	5
4.	D	30
5.	E	100
6.	F	30
7.	G	3

NOTE :-
 1. MS PLATE IS WELDED WITH BOLT HEAD THICKNESS 3MM.
 2. AND PERMANENT RIVETED WITH STAND POSTS.
 3. G ARE RIVETING HOLES / STEEL SREW (3MM).

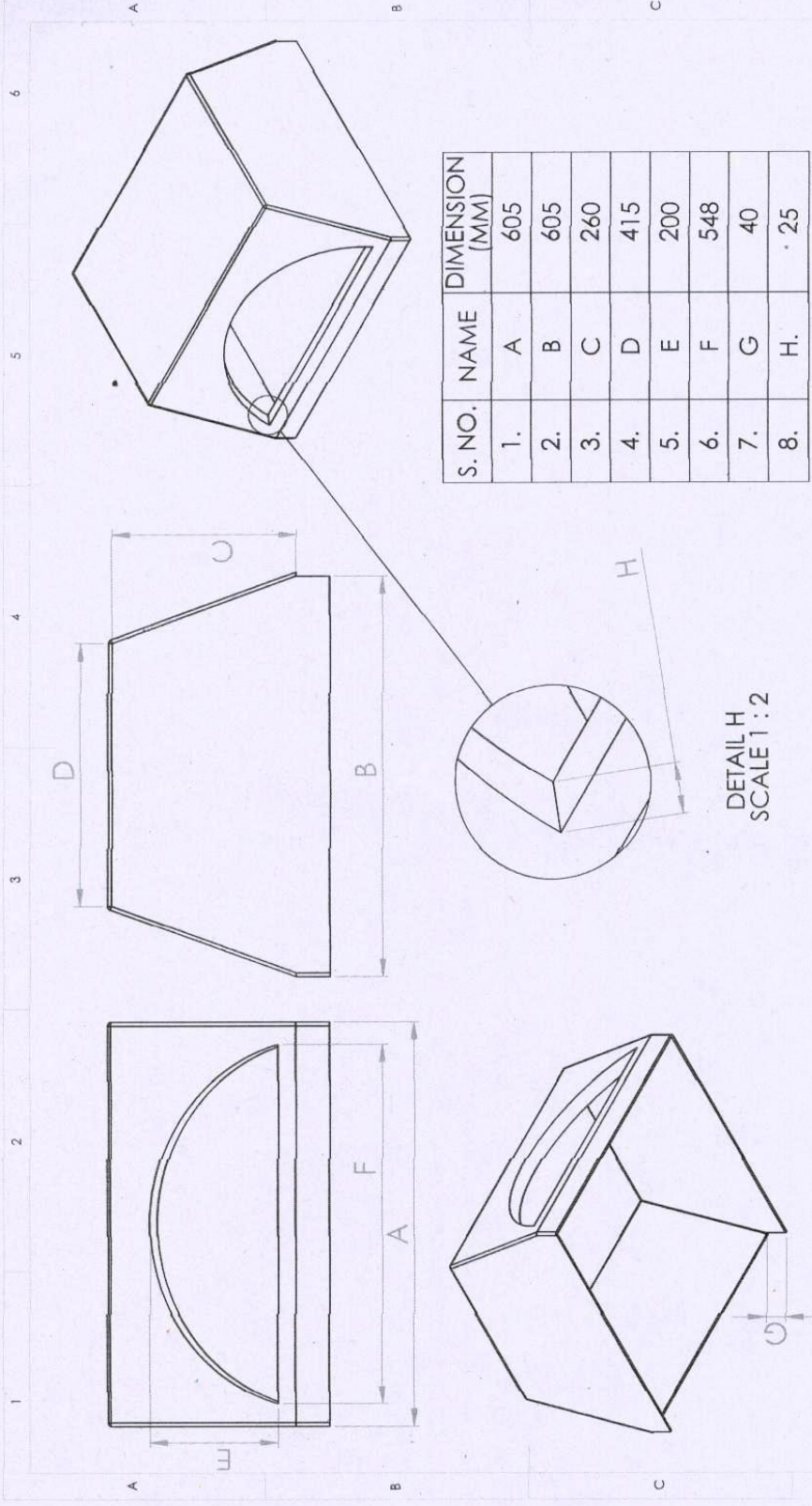
TITEL	GARBAGE BIN- 150 LTR / DOUBLE
SUB TITEL	HANGING PIN
VERSION	01
YEAR	2014
DWG NO.	DQA/GE/RC/287/DB-150/O6



S.NO.	NAME	DIMENSION (MM)
1.	A	530
2.	B	450
3.	C	600
4.	D	25
5.	E	25
6.	F	15
7.	G	140
8.	H	30Sq
9.	I	50
10.	J	21
11.	K	3

- NOTE:
1. L IS A SOLID BAR(30X30X50 MM) WELDED WITH CAGE UPPER STRIP AND DRILLED THROUGH.
 2. N AND M IS HANDEL (125X15X50 MM) .
 3. O IS A THIN PLATE 25X50X3 MM.
 4. ALL FLAT STEEL STRIPS SHOULD HAVE THICKNESS MINIMUM 3 MM.
 5. CAGE SHOULD BE RIVITED FOR STUDY AND RIGID STRUCTURE.
 6. K -FOR LUBRICATION TO PIN FOR SWING MOVEMENT.

TITEL	GARBAGE BIN- 150 LTR / DOUBLE
SUB TITEL	CAGE
VERSION	01
YEAR	2014
DWG NO.	DQA/GE/RC/287/DB-150/04

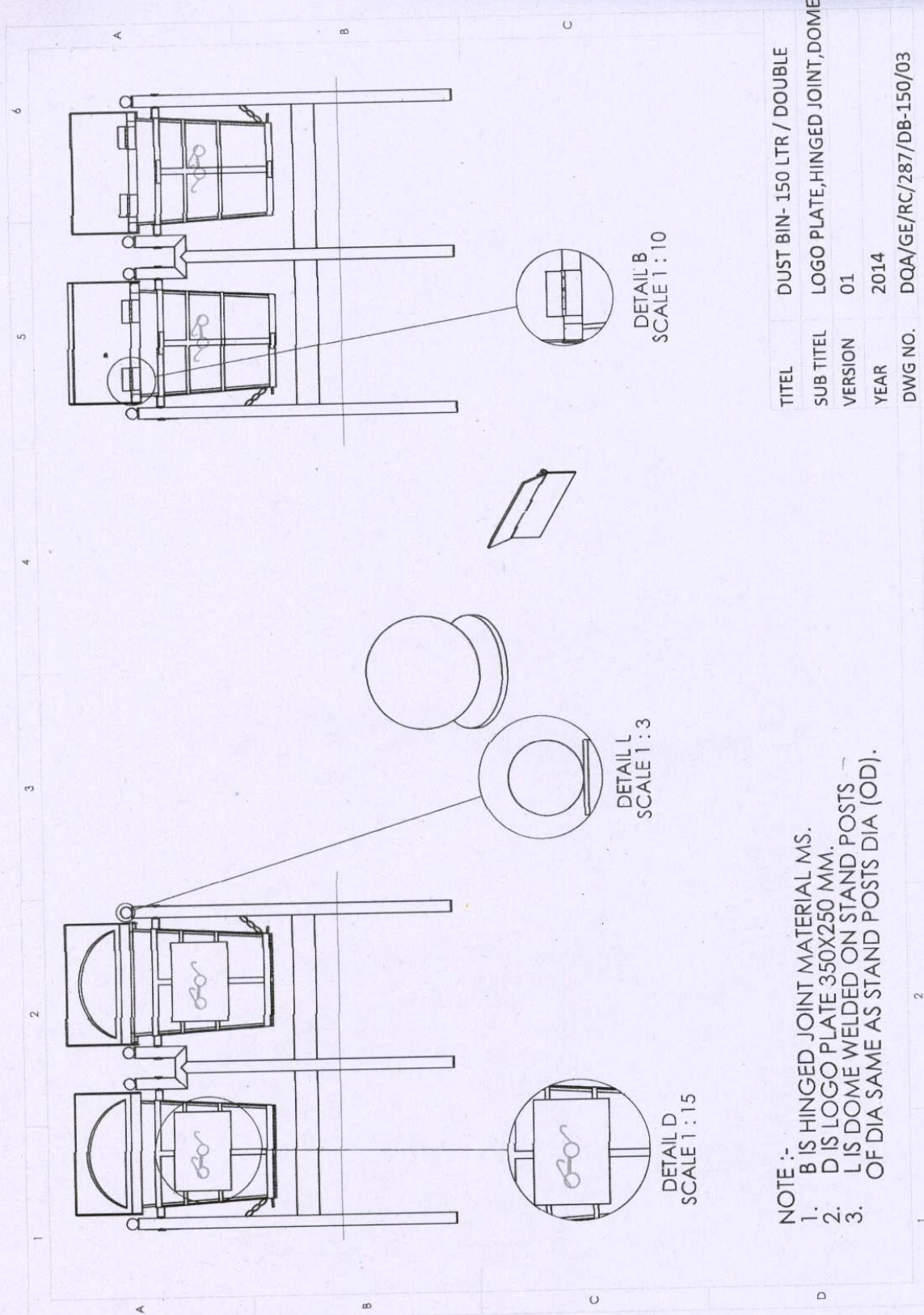


S. NO.	NAME	DIMENSION (MM)
1.	A	605
2.	B	605
3.	C	260
4.	D	415
5.	E	200
6.	F	548
7.	G	40
8.	H.	25

DETAIL H
SCALE 1 : 2

NOTE:-
 1. H IS COLLAR ON OPENING SECTION INWARD
 2. G IS THREE SIDECOLLAR(FRONT, LEFT, RIGHT)
 3. OVERALL MINIMUM THICKNESS SHOULD BE 5 MM

TITEL	GARBAGE BIN- 150 LTR / DOUBLE
SUB TITEL	LID
VERSION	01
YEAR	2014
DWG NO.	DQA/GE/RC/287/DB-150/07

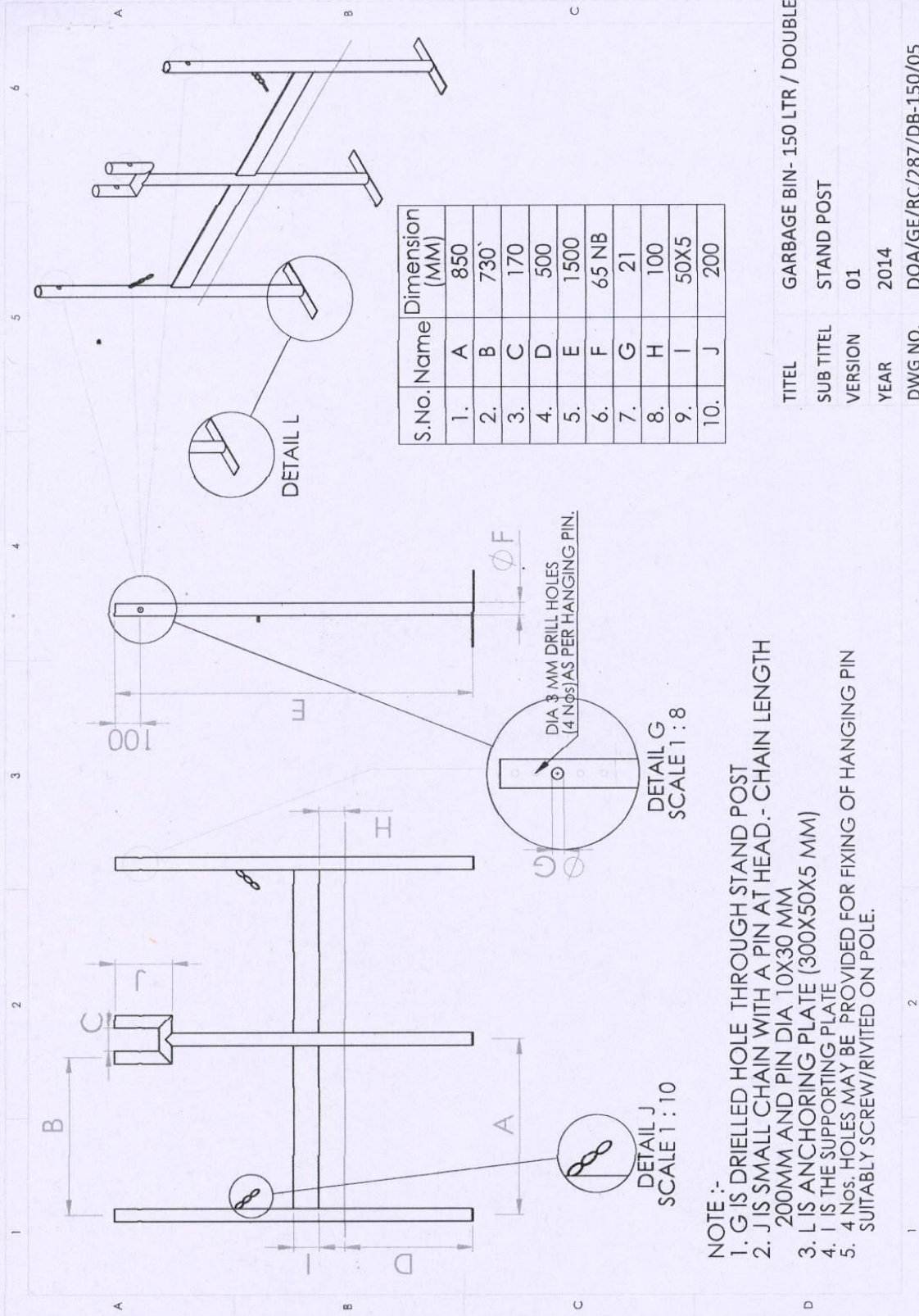


NOTE :-
 1. B IS HINGED JOINT MATERIAL MS.
 2. D IS LOGO PLATE 350X250 MM.
 3. L IS DOME WELDED ON STAND POSTS OF DIA SAME AS STAND POSTS DIA (OD).

DETAIL L
SCALE 1 : 3

DETAIL B
SCALE 1 : 10

DETAIL D
SCALE 1 : 15



TITLE	GARBAGE BIN- 150 LTR / DOUBLE
SUB TITLE	STAND POST
VERSION	01
YEAR	2014
DWG NO.	DQA/GE/RC/287/DB-150/05

- NOTE :-
1. G IS DRILLED HOLE THROUGH STAND POST
 2. J IS SMALL CHAIN WITH A PIN AT HEAD. - CHAIN LENGTH 200MM AND PIN DIA 10X30 MM
 3. L IS ANCHORING PLATE (300X50X5 MM)
 4. I IS THE SUPPORTING PLATE
 5. 4 Nos. HOLES MAY BE PROVIDED FOR FIXING OF HANGING PIN SUITABLY SCREW/RIVITED ON POLE.